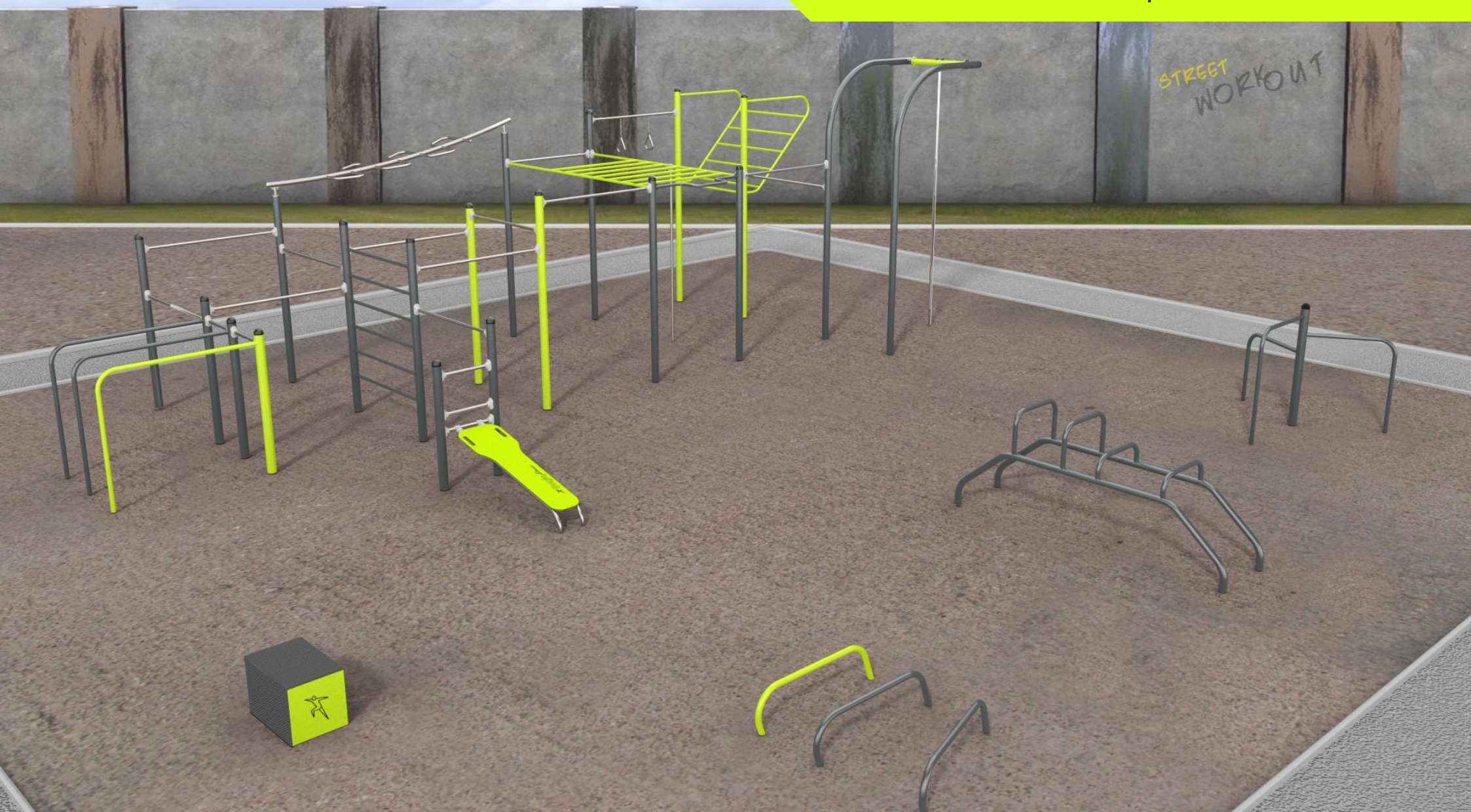




STREET WORKOUT

## Material Specification



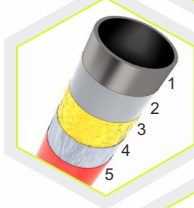
## Material Specification



Patented system of connectors and clamps made of strong aluminum alloy. The clamps ensures the stiffness of the construction and the simplicity of assembly. Alluminum is secured by the process of electrophoresis and powder coating with polyester paint UV resistant and Qualicoat attested.



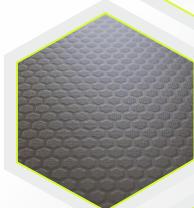
Solid construction made of stainless steel AISI304 totally resistant to weather conditions.



Solid construction made of black steel S235JR, cleaned in the sandblasting process. Protected against corrosion by galvanizing and powder coating with polyester paint QUALICOAT attested. 1-steel, 2-sandblasting, 3-iron phosphatizing, 4-zinc base, 5-polyester powder paint.



Colorfull HPL panels 13 mm thick, in the highest quality, totally damp-proof and resistant to UV



Anti-slip anthracite 10 mm HPL platform plate with a very high resistance to weather conditions and attrition.



Post ended with rubber plug buttons made of soft EDPM.



Climbing rocks made of chippings and colourful polyester raisin.



Polypropylene ropes pp-multisplit type with a steel core and a diameter of 16 mm.



Rope endings pressed in a sleeve made of durable aluminum alloy.



Fasteners (nuts, screws, caps) made of stainless steel.



Information Board with printout on UV-resistant foil, glued to a hot dip galvanised metal sheet. The board shows graphic descriptions of exercises which can be done on the choosen products.